

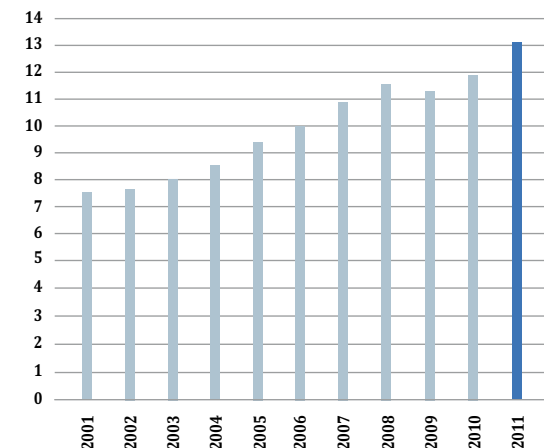
## Résultat du trafic global

	2011	2010	Variation 2011/2010
<b>PASSAGERS</b>			
Trafic de ligne	12'720'041	11'423'351	11,4%
Trafic charter	310'680	362'167	-14,2%
<b>Total ligne et charter</b>	<b>13'030'720</b>	<b>11'785'518</b>	<b>10,6%</b>
Taxi, sanitaire	55'390	52'479	5,5%
<b>Total trafic commercial</b>	<b>13'086'110</b>	<b>11'837'996</b>	<b>10,5%</b>
Total du trafic non commercial	44'112	42'401	4,0%
<b>Total trafic global</b>	<b>13'130'222</b>	<b>11'880'397</b>	<b>10,5%</b>
<b>MOUVEMENTS</b>			
Trafic de ligne	130'900	119'224	9,8%
Trafic charter	3'866	4'961	-22,1%
<b>Total ligne et charter</b>	<b>134'766</b>	<b>124'185</b>	<b>8,5%</b>
Taxi, sanitaire	26'938	25'759	4,6%
<b>Total trafic commercial</b>	<b>161'704</b>	<b>149'944</b>	<b>7,8%</b>
Total du trafic non commercial	27'417	27'456	-0,1%
<b>Total trafic global</b>	<b>189'121</b>	<b>177'400</b>	<b>6,6%</b>
<b>FRET (tonnes)</b>			
Trafic de ligne	38'837	30'257	28,4%
Trafic charter	7'279	9'284	-21,6%
<b>Fret aérien avionné</b>	<b>46'116</b>	<b>39'541</b>	<b>16,6%</b>
Fret aérien camionné	19'467	21'538	-9,6%
<b>Total fret aérien</b>	<b>65'583</b>	<b>61'079</b>	<b>7,4%</b>
Poste locale	6'862	6'155	11,0%
<b>Total fret aérien et poste</b>	<b>72'415</b>	<b>67'234</b>	<b>7,7%</b>

### Evolution du trafic

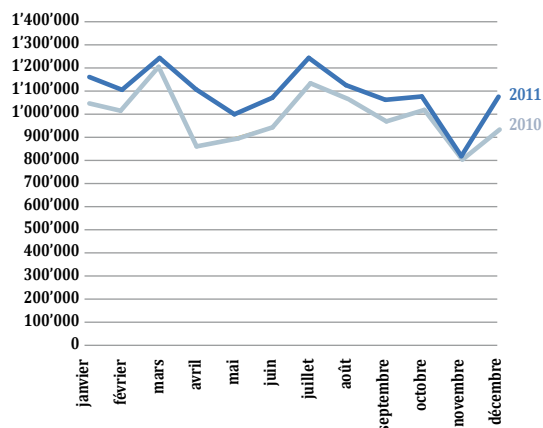
Passagers

millions



### Evolution mensuelle du trafic

Passagers



**Trafic de ligne par région et par pays**  
(Passagers en transit exclus)

Destination	Passagers	Variation 2011/2010
<i>Afrique</i>	<i>404'274</i>	<i>-8%</i>
<b>Algérie</b>	<b>23'721</b>	<b>2%</b>
Alger	23'721	2%
<b>Egypte</b>	<b>104'114</b>	<b>-8%</b>
Hourghada	28'787	109%
Le Caire	50'502	-29%
Sharm - el - Sheikh	24'825	-10%
<b>Ile Maurice</b>	<b>19'178</b>	<b>-8%</b>
Maurice	19'178	-8%
<b>Maroc</b>	<b>168'149</b>	<b>-11%</b>
Agadir	390	0%
Casablanca	103'860	-11%
Marrakech	63'899	-10%
<b>Tunisie</b>	<b>89'112</b>	<b>-8%</b>
Djerba	18'689	-13%
Monastir	7'437	3%
Tunis	62'986	-8%
<i>Amérique</i>	<i>440'790</i>	<i>1%</i>
<b>Canada</b>	<b>95'312</b>	<b>6%</b>
Montréal	95'312	6%
<b>Etats-Unis</b>	<b>345'478</b>	<b>0%</b>
New York-Newark	119'208	2%
New York-JFK	135'616	1%
Washington DC	90'654	-5%
<i>Asie</i>	<i>508'496</i>	<i>33%</i>
<b>Arabie Saoudite</b>	<b>30'037</b>	<b>19%</b>
Jeddah	15'953	17%
Riyad	14'084	21%
Bahreïn	9'643	0%
Bahreïn	9'643	0%
<b>Chypre</b>	<b>6'977</b>	<b>167%</b>
Larnaca	6'977	167%
<b>Emirats Arabes Unis</b>	<b>161'152</b>	<b>103%</b>
Abu Dhabi	80'797	2%
Dubaï*	80'355	
<b>Iran</b>	<b>6'105</b>	<b>-45%</b>
Téhéran	6'105	-45%
<b>Israël</b>	<b>110'648</b>	<b>86%</b>
Tel Aviv	110'648	86%
<b>Jordanie</b>	<b>14'863</b>	<b>-13%</b>
Amman	14'863	-13%
<b>Koweït</b>	<b>9'061</b>	<b>6%</b>
Koweït	9'061	6%
<b>Liban</b>	<b>55'429</b>	<b>-4%</b>
Beyrouth	55'429	-4%
<b>Ouzbékistan</b>	<b>3'477</b>	<b>21%</b>
Tachkent	3'477	21%
<b>Qatar</b>	<b>101'104</b>	<b>28%</b>
Doha	101'104	28%
<i>Europe</i>	<i>11'347'866</i>	<i>11%</i>
<b>Allemagne</b>	<b>930'894</b>	<b>19%</b>
Berlin	154'789	55%
Dusseldorf	77'734	30%
Francfort	413'783	11%
Hambourg	41'564	18%
Munich	242'632	14%
Stuttgart	392	

<b>Autriche</b>	<b>142'813</b>	<b>2%</b>
Vienne	142'813	2%
<b>Belgique</b>	<b>509'564</b>	<b>15%</b>
Bruxelles	509'564	15%
<b>Croatie</b>	<b>18'580</b>	<b>-11%</b>
Dubrovnik	5'594	-42%
Split	12'986	15%
<b>Danemark</b>	<b>201'347</b>	<b>2%</b>
Copenhague	201'347	2%
<b>Espagne</b>	<b>1'420'640</b>	<b>27%</b>
Alicante	69'540	16%
Barcelone	517'070	28%
Bilbao*	5'671	
Grande Canarie	7'050	-42%
Ibiza	20'340	0%
Madrid	569'607	34%
Malaga	99'384	10%
Oviedo	9'849	4%
Palma de Majorque	88'265	14%
Saint-Jacques-de-Compostelle*	21'091	
Tenerife	7'572	134%
Valence	5'201	-46%
<b>Finlande</b>	<b>77'764</b>	<b>12%</b>
Helsinki	77'764	12%
<b>France</b>	<b>1'564'417</b>	<b>5%</b>
Ajaccio	16'891	-4%
Bastia	10'685	-8%
Biarritz	7'204	-45%
Bordeaux	124'970	2%
Marseille	3'707	-45%
Nantes	102'642	34%
Nice	335'207	7%
Paris-Charles De Gaulle	652'106	1%
Paris-Orly	255'311	20%
St-Tropez	2'336	-21%
Toulouse	53'358	-12%
<b>Grèce</b>	<b>174'766</b>	<b>28%</b>
Athènes	128'267	10%
Heraklion	26'532	103%
Cos	5'288	60%
Mykonos	9'840	0%
Rhodes	3'089	-14%
Santorin	1'750	0%
<b>Hongrie</b>	<b>130'908</b>	<b>1%</b>
Budapest	130'908	1%
<b>Islande</b>	<b>1'527</b>	<b>-9%</b>
Reykjavik	1'527	-9%
<b>Irlande</b>	<b>98'212</b>	<b>-1%</b>
Cork	3'534	-51%
Dublin	94'678	3%
<b>Italie</b>	<b>474'917</b>	<b>14%</b>
Brindisi	38'089	132%
Cagliari	9'416	-5%
Catane	8'755	-8%
Florence	11'870	17%
Milan	1'528	-77%
Naples	49'583	8%
Olbia	11'920	-2%
Rome	326'815	14%
Venise	16'941	-18%

\*Nouvelle destination

Lettonie	5'582	-73%
Riga	5'582	-73%
Luxembourg	32'731	12%
Luxembourg	32'731	12%
Malte	11'793	-10%
Malte	11'793	-10%
Norvège	44'500	0%
Oslo	44'500	0%
Pays-Bas	596'126	13%
Amsterdam	587'560	13%
Rotterdam	8'566	-12%
Pologne	44'503	27%
Varsovie	44'503	27%
Portugal	779'481	12%
Faro	13'077	37%
Lisbonne	398'218	7%
Porto	368'186	16%
Tchéquie	50'145	12%
Prague	50'145	12%
Roumanie	3'949	-85%
Bucarest	3'949	-85%
Royaume-Uni	2'849'198	9%
Belfast	27'947	25%
Birmingham	51'328	7%
Bournemouth	29'850	12%
Bristol	145'309	4%
Cardiff	4'235	-30%
Edimbourg	115'126	8%
Exeter	1'590	-15%
Glasgow	16'217	31%
Guernsey	5'072	1%
Ile de Man	1'813	1%
Jersey	2'892	-5%
Leeds	47'590	65%
Liverpool	133'477	0%
Londres-Gatwick	595'540	13%
Londres-Luton	265'565	5%
Londres-Stansted	66'617	10%
Londres-City	192'282	-10%
Londres-Heathrow	967'344	14%
Manchester	119'702	6%
Newcastle	31'866	-8%
Nottingham East Midlands	21'298	-3%
Southampton	6'538	6%
Russie	235'607	28%
Moscou-Domododovo	91'162	2%
Moscou-Sheremetyevo	142'177	53%
Saint-Petersbourg	2'268	14%
Kosovo	79'189	65%
Pristina	79'189	65%
Suède	118'093	6%
Stockholm	118'093	6%
Suisse	558'329	-1%
Lugano	38'533	7%
Zurich	519'796	-2%
Turquie	165'722	1%
Antalya	11'702	-25%
Istanbul	154'020	3%
Ukraine	26'569	118%
Kiev	26'569	118%

**Total général 12'701'426**

### Trafic de ligne 2011 par compagnie (Passagers en connection et en transit exclus)

Compagnie	Passagers	Variation 2011 / 2010			
Easyjet	4'828'959	18%	Egyptair	50'502	-37%
Swiss	1'947'009	18%	Jet 2	48'379	32%
Lufthansa	775'826	14%	El Al	46'995	19%
Air France	658'133	1%	Lot Polish Airlines	44'503	27%
British Airways	622'764	12%	Bmi Baby	38'221	-11%
KLM	385'785	16%	Luxair	32'731	12%
Brussels Airlines	327'851	15%	Saudi Arabian	30'037	19%
TAP Portugal	297'723	11%	Ukraine Int.	26'569	118%
Iberia	285'240	-11%	Air Algerie	23'721	-6%
Darwin Airline *	191'444	-48%	Air Malta	20'548	-9%
SAS Scandinavian	189'244	4%	Jet4you	19'691	-41%
Turkish Airlines	154'020	3%	Belair	19'243	-10%
Austrian	142'813	2%	Air Mauritius	19'178	-8%
Aeroflot	142'177	53%	Royal Jordanian	14'863	-13%
Alitalia	119'363	-4%	Pegasus Airlines	11'702	0%
United Airlines	107'405	13%	Fly Be	11'527	-11%
Continental	102'457	-13%	Gulf Air	9'643	
Qatar Airways	101'104	28%	Kuwait Airways	9'330	9%
Aer Lingus	98'212	-1%	Transavia Airlines	8'566	-12%
Air Canada	95'312	6%	Blue Islands	6'378	-1%
Royal Air Maroc	92'202	-9%	Iran Air	6'115	-45%
Tunisair	89'112	-8%	Air Baltic	5'582	-73%
Ethihad Airways	80'797	2%	Twin Jet	5'235	-6%
Edelweiss Air	80'755	126%	Uzbekistan Airways	3'477	21%
Emirates	80'355		Rossiya	2'268	14%
Finnair	77'764	12%	Czech Connect	853	
Norwegian	56'314	-9%			
Middle East Airlines	55'429	-4%	<b>Total</b>	<b>12'701'426</b>	

\* groupement des données Baboo et Darwin suite à leur fusion en 2011