

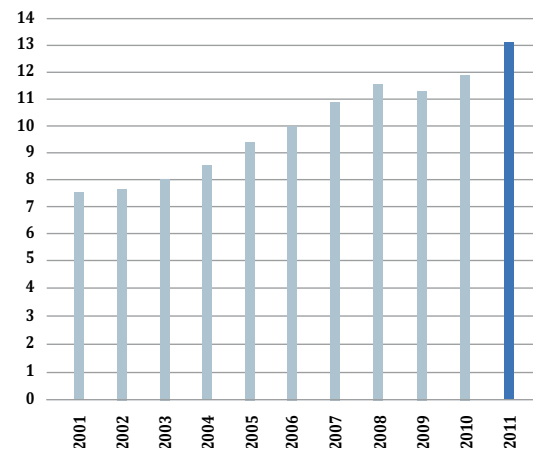
Overall traffic performance

	2011	2010	Variation 2011/2010
PASSENGERS			
Scheduled traffic	12'720'041	11'423'351	11.4%
Charter traffic	310'680	362'167	-14.2%
Total scheduled and charter	13'030'720	11'785'518	10.6%
Taxi, medical	55'390	52'479	5.5%
Total commercial traffic	13'086'110	11'837'996	10.5%
Total non-commercial traffic	44'112	42'401	4.0%
Total overall traffic	13'130'222	11'880'397	10.5%
MOVEMENTS			
Scheduled traffic	130'900	119'224	9.8%
Charter traffic	3'866	4'961	-22.1%
Total scheduled and charter	134'766	124'185	8.5%
Taxi, medical	26'938	25'759	4.6%
Total commercial traffic	161'704	149'944	7.8%
Total non-commercial traffic	27'417	27'456	-0.1%
Total overall traffic	189'121	177'400	6.6%
FREIGHT (tonnes)			
Scheduled traffic	38'837	30'257	28.4%
Charter traffic	7'279	9'284	-21.6%
Airlifted airfreight	46'116	39'541	16.6%
Trucked airfreight	19'467	21'538	-9.6%
Total airfreight	65'583	61'079	7.4%
Local post	6'862	6'155	11.0%
Total airfreight and post	72'415	67'234	7.7%

Traffic evolution

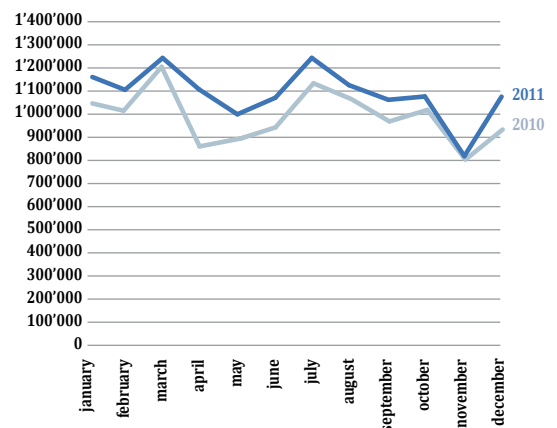
Passengers

million



Monthly traffic evolution

Passengers



Scheduled traffic by destination
(Excluding transit passengers)

Destination	Passengers	Variation 2011/2010
<i>Afrika</i>	404'274	-8%
Algeria	23'721	2%
Algiers	23'721	2%
Egypt	104'114	-8%
Hurghada	28'787	109%
Cairo	50'502	-29%
Sharm El Sheikh	24'825	-10%
Mauritius	19'178	-8%
Mauritius	19'178	-8%
Morocco	168'149	-11%
Agadir	390	0%
Casablanca	103'860	-11%
Marrakech	63'899	-10%
Tunisia	89'112	-8%
Djerba	18'689	-13%
Monastir	7'437	3%
Tunis	62'986	-8%
<i>Americas</i>	440'790	1%
Canada	95'312	6%
Montreal	95'312	6%
United States	345'478	0%
New York-Newark	119'208	2%
New York-JFK	135'616	1%
Washington DC	90'654	-5%
<i>Asia</i>	508'496	33%
Bahrain	9'643	0%
Bahrain	9'643	0%
Cyprus	6'977	167%
Larnaca	6'977	167%
Iran	6'105	-45%
Tehran	6'105	-45%
Israel	110'648	86%
Tel Aviv	110'648	86%
Jordan	14'863	-13%
Amman	14'863	-13%
Kuwait	9'061	6%
Kuwait	9'061	6%
Lebanon	55'429	-4%
Beirut	55'429	-4%
Qatar	101'104	28%
Doha	101'104	28%
Saudi Arabia	30'037	19%
Jeddah	15'953	17%
Riyadh	14'084	21%
United Arab Emirates	161'152	103%
Abu Dhabi	80'797	2%
Dubai*	80'355	
Uzbekistan	3'477	21%
Tashkent	3'477	21%
<i>Europa</i>	11'347'866	11%
Austria	142'813	2%
Vienna	142'813	2%
Belgium	509'564	15%
Brussels	509'564	15%
Croatia	18'580	-11%
Dubrovnik	5'594	-42%
Split	12'986	15%
Czech Republic	50'145	12%
Prague	50'145	12%
Denmark	201'347	2%
Copenhagen	201'347	2%
Finland	77'764	12%
Helsinki	77'764	12%
France	1'564'417	5%
Ajaccio	16'891	-4%
Bastia	10'685	-8%
Biarritz	7'204	-45%
Bordeaux	124'970	2%
Marseilles	3'707	-45%
Nantes	102'642	34%
Nice	335'207	7%
Paris-Charles De Gaulle	652'106	1%
Paris-Orly	255'311	20%
St-Tropez	2'336	-21%
Toulouse	53'358	-12%
Germany	930'894	19%
Berlin	154'789	55%
Dusseldorf	77'734	30%
Frankfurt	413'783	11%
Hamburg	41'564	18%
Munich	242'632	14%
Stuttgart	392	
Greece	174'766	28%
Athens	128'267	10%
Heraklion	26'532	103%
Kos	5'288	60%
Mykonos	9'840	0%
Rhodos	3'089	-14%
Santorini	1'750	0%
Hungary	130'908	1%
Budapest	130'908	1%
Iceland	1'527	-9%
Reykjavik	1'527	-9%
Ireland	98'212	-1%
Cork	3'534	-51%
Dublin	94'678	3%
Italy	474'917	14%
Brindisi	38'089	132%
Cagliari	9'416	-5%
Catania	8'755	-8%
Florence	11'870	17%
Milan	1'528	-77%
Naples	49'583	8%
Olbia	11'920	-2%
Rome	326'815	14%
Venice	16'941	-18%
Kosovo	79'189	65%
Pristina	79'189	65%
Latvia	5'582	-73%
Riga	5'582	-73%
Luxembourg	32'731	12%
Luxembourg	32'731	12%
Malta	11'793	-10%
Malta	11'793	-10%
Netherlands	596'126	13%
Amsterdam	587'560	13%
Rotterdam	8'566	-12%

*New destination

Norway	44'500	0%
Oslo	44'500	0%
Poland	44'503	27%
Warsaw	44'503	27%
Portugal	779'481	12%
Faro	13'077	37%
Lisbon	398'218	7%
Porto	368'186	16%
Romania	3'949	-85%
Bucharest	3'949	-85%
Russian Federation	235'607	28%
Moscow-Domodovo	91'162	2%
Moscow-Sheremetyevo	142'177	53%
St. Petersburg	2'268	14%
Spain	1'420'640	27%
Alicante	69'540	16%
Barcelona	517'070	28%
Bilbao*	5'671	
Gran Canaria	7'050	-42%
Ibiza	20'340	0%
Madrid	569'607	34%
Malaga	99'384	10%
Oviedo	9'849	4%
Palma De Mallorca	88'265	14%
Santiago de Compostela*	21'091	
Tenerife	7'572	134%
Valencia	5'201	-46%
Sweden	118'093	6%
Stockholm	118'093	6%
Switzerland	558'329	-1%
Lugano	38'533	7%
Zurich	519'796	-2%
Turkey	165'722	1%
Antalya	11'702	-25%
Istanbul	154'020	3%
Ukraine	26'569	118%
Kiev	26'569	118%
United Kingdom	2'849'198	9%
Belfast	27'947	25%
Birmingham	51'328	7%
Bournemouth	29'850	12%
Bristol	145'309	4%
Cardiff	4'235	-30%
Edinburgh	115'126	8%
Exeter	1'590	-15%
Glasgow	16'217	31%
Guernsey	5'072	1%
Isle of Man	1'813	1%
Jersey	2'892	-5%
Leeds	47'590	65%
Liverpool	133'477	0%
London-Gatwick	595'540	13%
London-Luton	265'565	5%
London-Stansted	66'617	10%
Londres-City	192'282	-10%
London-Heathrow	967'344	14%
Manchester	119'702	6%
Newcastle	31'866	-8%
Nottingham East Midlands	21'298	-3%
Southampton	6'538	6%

Total General 12'701'426

Scheduled traffic 2011 by airline (Excluding transit passengers)

Compagnie	Passengers	Variation 2011 / 2010			
Easyjet	4'828'959	18%	Egyptair	50'502	-37%
Swiss	1'947'009	18%	Jet 2	48'379	32%
Lufthansa	775'826	14%	El Al	46'995	19%
Air France	658'133	1%	Lot Polish Airlines	44'503	27%
British Airways	622'764	12%	Bmi Baby	38'221	-11%
KLM	385'785	16%	Luxair	32'731	12%
Brussels Airlines	327'851	15%	Saudi Arabian	30'037	19%
TAP Portugal	297'723	11%	Ukraine Int.	26'569	118%
Iberia	285'240	-11%	Air Algerie	23'721	-6%
Darwin Airline *	191'444	-48%	Air Malta	20'548	-9%
SAS Scandinavian	189'244	4%	Jet4you	19'691	-41%
Turkish Airlines	154'020	3%	Belair	19'243	-10%
Austrian	142'813	2%	Air Mauritius	19'178	-8%
Aeroflot	142'177	53%	Royal Jordanian	14'863	-13%
Alitalia	119'363	-4%	Pegasus Airlines	11'702	0%
United Airlines	107'405	13%	Fly Be	11'527	-11%
Continental	102'457	-13%	Gulf Air	9'643	
Qatar Airways	101'104	28%	Kuwait Airways	9'330	9%
Aer Lingus	98'212	-1%	Transavia Airlines	8'566	-12%
Air Canada	95'312	6%	Blue Islands	6'378	-1%
Royal Air Maroc	92'202	-9%	Iran Air	6'115	-45%
Tunisair	89'112	-8%	Air Baltic	5'582	-73%
Ethihad Airways	80'797	2%	Twin Jet	5'235	-6%
Edelweiss Air	80'755	126%	Uzbekistan Airways	3'477	21%
Emirates	80'355		Rossiya	2'268	14%
Finnair	77'764	12%	Czech Connect	853	
Norwegian	56'314	-9%			
Middle East Airlines	55'429	-4%			
Total	12'701'426				