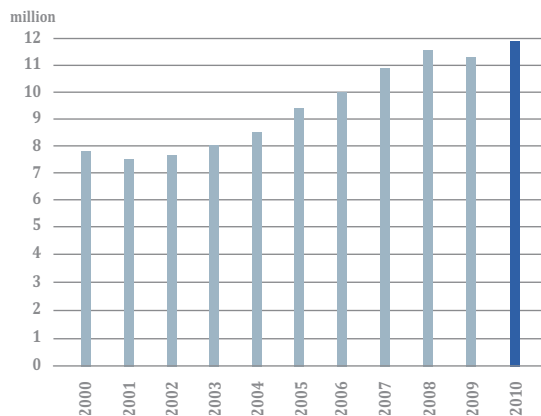


## Overall traffic performance

	2010	2009	Variation 2010/2009
<b>PASSENGERS</b>			
Scheduled traffic	11'423'351	10'766'038	6.11%
Charter traffic	362'167	471'712	-23.22%
<b>Total scheduled and charter</b>	<b>11'785'518</b>	<b>11'237'750</b>	<b>4.87%</b>
Taxi, medical	52'479	48'205	8.87%
<b>Total commercial traffic</b>	<b>11'837'996</b>	<b>11'285'955</b>	<b>4.89%</b>
Total non-commercial traffic	42'401	38'186	11.04%
<b>Total overall traffic</b>	<b>11'880'397</b>	<b>11'324'141</b>	<b>4.91%</b>
<b>MOVEMENTS</b>			
Scheduled traffic	119'224	117'861	1.16%
Charter traffic	4'961	6'179	-19.71%
<b>Total scheduled and charter</b>	<b>124'185</b>	<b>124'040</b>	<b>0.12%</b>
Taxi, medical	25'759	23'638	8.97%
<b>Total commercial traffic</b>	<b>149'944</b>	<b>147'678</b>	<b>1.53%</b>
Total non-commercial traffic	27'456	24'993	9.85%
<b>Total overall traffic</b>	<b>177'400</b>	<b>172'671</b>	<b>2.74%</b>
<b>FREIGHT (tonnes)</b>			
Scheduled traffic	30'257	21'359	41.66%
Charter traffic	9'284	8'277	12.16%
<b>Airlifted airfreight</b>	<b>39'541</b>	<b>29'636</b>	<b>33.42%</b>
Trucked airfreight	21'538	16'798	28.22%
<b>Total airfreight</b>	<b>61'079</b>	<b>46'434</b>	<b>31.54%</b>
Local post	6'159	6'370	-3.31%
<b>Total airfreight and post</b>	<b>67'238</b>	<b>52'804</b>	<b>27.33%</b>

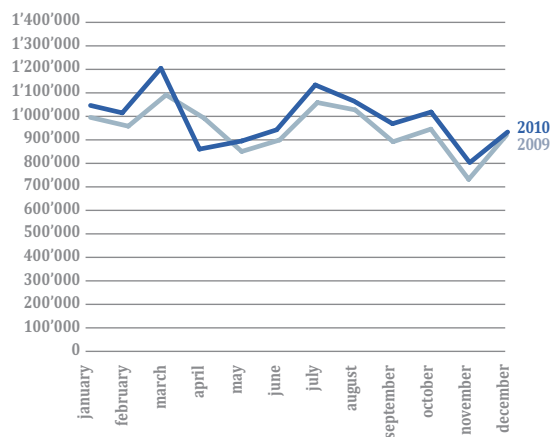
## Traffic evolution

Passengers



## Monthly traffic evolution

Passengers



Scheduled traffic by destination (Excluding transit passengers)

Destination	Passengers	Variation 2010/2009
<b>Africa</b>	<b>443,445</b>	<b>11%</b>
<b>Algeria</b>	<b>25,240</b>	<b>-3%</b>
Algiers	23,265	-1%
Constantine	952	-19%
Oran	1,023	-20%
<b>Egypt</b>	<b>112,646</b>	<b>52%</b>
Hurghada	13,799	51%
Cairo	71,251	13%
Sharm El Sheikh*	27,596	
<b>Mauritius</b>	<b>20,743</b>	<b>27%</b>
Mauritius	20,743	27%
<b>Morocco</b>	<b>187,960</b>	<b>2%</b>
Casablanca	117,097	1%
Marrakech	70,863	2%
<b>Tunisia</b>	<b>96,856</b>	<b>-0%</b>
Djerba	21,421	-4%
Monastir	7,236	5%
Tunis	68,199	0%
<b>Americas</b>	<b>436,341</b>	<b>21%</b>
<b>Canada</b>	<b>89,801</b>	<b>47%</b>
Montreal / Toronto	89,801	47%
<b>United States</b>	<b>346,540</b>	<b>16%</b>
New York-Newark	117,252	-5%
New York-JFK	133,946	26%
Washington DC	95,342	37%
<b>Asia</b>	<b>508,376</b>	<b>26%</b>
<b>Cyprus</b>	<b>2,613</b>	<b>17%</b>
Larnaca	2,613	17%
<b>Iran</b>	<b>11,031</b>	<b>3%</b>
Tehran	11,031	3%
<b>Israel</b>	<b>59,646</b>	<b>59%</b>
Tel Aviv	59,646	59%
<b>Jordan</b>	<b>17,135</b>	<b>-10%</b>
Amman	17,135	-10%
<b>Kuwait</b>	<b>8,528</b>	<b>-9%</b>
Kuwait	8,528	-9%
<b>Lebanon</b>	<b>57,972</b>	<b>22%</b>
Beirut	57,972	22%
<b>Qatar</b>	<b>79,246</b>	<b>57%</b>
Doha	79,246	57%
<b>Saudi Arabia</b>	<b>25,244</b>	<b>74%</b>
Jeddah	13,633	144%
Riyadh	11,611	30%
<b>Turkey</b>	<b>164,707</b>	<b>11%</b>
Antalya	15,535	206%
Istanbul	149,172	4%
<b>United Arab Emirates</b>	<b>79,388</b>	<b>30%</b>
Abu Dhabi	79,388	30%
<b>Uzbekistan</b>	<b>2,866</b>	<b>33%</b>
Tashkent	2,866	33%
<b>Europe</b>	<b>10,013,893</b>	<b>5%</b>
<b>Austria</b>	<b>139,768</b>	<b>4%</b>
Vienna	139,768	4%
<b>Belgium</b>	<b>442,027</b>	<b>3%</b>
Brussels	442,027	3%
<b>Croatia</b>	<b>20,890</b>	<b>22%</b>
Dubrovnik	9,644	115%
Split	11,246	-11%
<b>Czech Republic</b>	<b>44,634</b>	<b>-26%</b>
Prague	44,634	-26%
<b>Denmark</b>	<b>198,836</b>	<b>35%</b>
Billund*	2,118	
Copenhagen	196,718	33%
<b>Finland</b>	<b>69,557</b>	<b>4%</b>
Helsinki	69,557	4%
<b>France</b>	<b>1,485,673</b>	<b>4%</b>
Ajaccio	17,630	18%
Bastia	11,596	133%
Biarritz	13,206	9%
Bordeaux	122,794	22%
Figari	2,049	0%
Marseilles	6,759	405%
Nantes	76,780	44%
Nice	311,940	-0%
Paris-Charles De Gaulle	646,121	-5%
Paris-Orly	213,008	0%
St-Tropez	2,960	-3%
Toulouse	60'830	124%
<b>Germany</b>	<b>780,572</b>	<b>6%</b>
Berlin	99,805	6%
Dusseldorf	60,013	13%
Frankfurt	372,319	2%
Hamburg	35,123	29%
Munich	213,312	6%
<b>Greece</b>	<b>136,905</b>	<b>2%</b>
Athens	116,932	-7%
Heraklion	13,086	192%
Kos	3,308	-15%
Rhodos	3,579	0.00%
<b>Hungary</b>	<b>129,092</b>	<b>-7%</b>
Budapest	129,092	-7%
<b>Iceland</b>	<b>1,687</b>	<b>-30%</b>
Reykjavik	1,687	-30%



Passengers traffic peak  
March : 1,204,385

<b>Ireland</b>	<b>99,174</b>	<b>-3%</b>
Cork	7,282	-6%
Dublin	91,892	-3%
<b>Italy</b>	<b>418,108</b>	<b>32%</b>
Brindisi	16,441	70%
Cagliari	9,956	45%
Catania	9,495	-9%
Florence	10,106	-38%
Milan	6,540	169%
Naples	46,060	-11%
Olbia	12,182	-16%
Rome	286,549	58%
Venice	20,779	-10%
<b>Latvia</b>	<b>20,805</b>	<b>137%</b>
Riga	20,805	137%
<b>Luxembourg</b>	<b>29,174</b>	<b>-2%</b>
Luxembourg	29,174	-2%
<b>Malta</b>	<b>13,132</b>	<b>-20%</b>
Malta	13,132	-20%
<b>Netherlands</b>	<b>528,718</b>	<b>3%</b>
Amsterdam	519,017	3%
Rotterdam	9,701	-1%
<b>Norway</b>	<b>44,444</b>	<b>15%</b>
Oslo	44,444	15%
<b>Poland</b>	<b>35,081</b>	<b>6%</b>
Warsaw	35,081	6%
<b>Portugal</b>	<b>699,007</b>	<b>13%</b>
Faro*	9,534	
Lisbon	373,232	6%
Porto	316,241	17%
<b>Romania</b>	<b>26,778</b>	<b>-32%</b>
Bucharest	26,778	-32%
<b>Russian Federation</b>	<b>184,037</b>	<b>10%</b>
Moscow-Domededovo	89,331	5%
Moscow-Sheremetyevo 2	92,708	15%
St. Petersburg	1,998	-3%
<b>Kosovo*</b>	<b>48,103</b>	
Pristina*	48,103	
<b>Spain</b>	<b>1,115,031</b>	<b>9%</b>
Alicante	60,135	0%
Barcelona	404,418	10%
Gran Canaria	12,183	-34%
Ibiza	20,315	15%
Madrid	424,852	2%
Malaga	90,756	41%
Oviedo	9,453	-29%
Palma De Mallorca	77,103	66%
Santiago De Compostela	2,899	-32%
Tenerife	3,230	-26%
Valencia	9,687	-5%
<b>Sweden</b>	<b>111,062</b>	<b>4%</b>
Stockholm	111,062	4%
<b>Switzerland</b>	<b>564,612</b>	<b>5%</b>
Lugano	36,009	-5%
Zurich	528,603	6%
<b>Ukraine*</b>	<b>12,192</b>	
Kiev*	12,192	
<b>United Kingdom</b>	<b>2,614,794</b>	<b>-0%</b>
Belfast	22,364	10%
Birmingham	48,165	-15%
Blackpool	414	-80%
Bournemouth	26,668	-4%
Bristol	139,315	-6%
Cardiff	6,021	-37%
Edinburgh	106,327	2%
Exeter	1,865	-23%

Glasgow	12,352	11%
Guernsey	5,017	104%
Isle of Man	1,801	-1%
Jersey	3,057	-53%
Leeds	28,887	-38%
Liverpool	133,025	-3%
London-Gatwick	525,277	-4%
London-Luton	253,684	-12%
London-Stansted	60,688	-3%
London-City	212,765	-25%
London-Heathrow	849,756	44%
Manchester	112,898	-5%
Newcastle	34,450	1%
Norwich	1,447	-2%
Nottingham East Midlands	21,931	-80%
Oxford	456	418%
Southampton	6,164	-17%
<b>Total General</b>	<b>11,402,055</b>	<b>6,4%</b>

\*New destination

### Scheduled traffic 2010 by airline

Excluding transit passengers

Airline	Passengers	Variation %	El Al	39,364	5%
Easyjet	4,077,004	8%	Jet 2	36,671	-45%
Swiss	1,644,596	22%	Darwin Airline	36,009	-5%
Lufthansa	680,711	5%	Edelweiss Air	35,793	105%
Air France	654,724	-9%	Lot Polish Airlines	35,081	6%
British Airways	554,096	-15%	Jet4you	33,544	-17%
KLM	333,510	6%	Luxair	29,174	-2%
Baboo	333,379	2%	Saudi Arabian	25,244	65%
Iberia	319,162	-2%	Air Algérie	25,240	-3%
Brussels Airlines	285,909	0%	Air Malta	22,627	-16%
TAP Portugal	268,280	8%	Belair	21,431	
SAS Scandinavian	181,383	-4%	Air Baltic	20,805	137%
Turkish Airlines	149,172	11%	Air Mauritius	20,743	27%
Austrian	139,768	19%	Royal Jordanian	17,135	-10%
Alitalia	124,580	11%	Ukraine Int.	12,192	100%
Continental	117,252	-5%	Transavia	11,819	19%
Royal Air Maroc	101,818	33%	Fly Be	12,938	-5%
Aer Lingus	99,174	-3%	Pegasus Airlines	11,728	131%
Tunisair	96,856	0%	Iran Air	11,031	3%
United Airlines	95,342	37%	Kuwait Airways	8,599	-8%
Aeroflot	92,708	15%	Blue Islands	6,413	-24%
Air Canada	89,801	47%	Twin Jet	5,581	100%
Egyptair	79,886	10%	Thomas Cook	4,962	100%
Etihad Airways	79,388	30%	Uzbekistan Airways	2,866	33%
Qatar Airways	79,246	57%	Rossiya	1,998	-3%
Finnair	69,557	4%	Cimber Sterling	1,829	
Norwegian	61,548	26%	Astraeus	1,687	-30%
Middle East Airlines	57,972	22%			
BMI Baby	42,729	-7%	<b>Total</b>	<b>11,402,055</b>	<b>6,4%</b>