

Statistiques du trafic

28

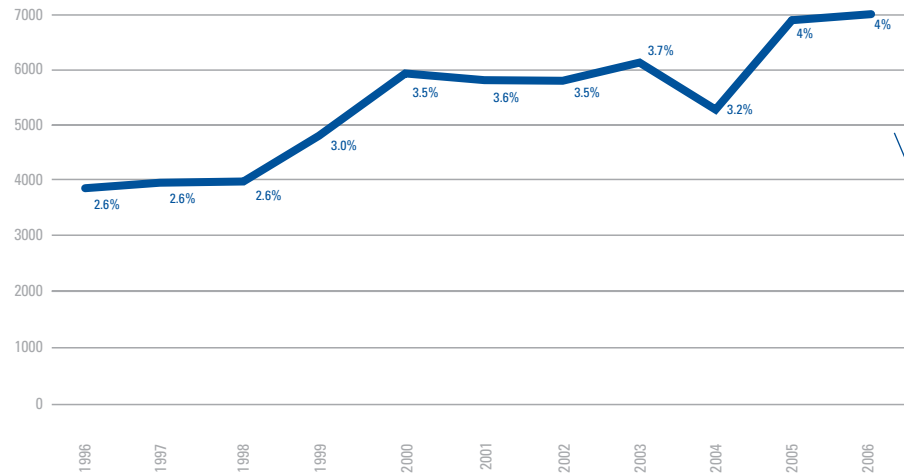
Résultats du trafic global / Global traffic

	2006 %/total	2006	2005	variation %	
Passagers					Passengers
Trafic de ligne	93.1	9'278'362	8'691'318	6.8	<i>Scheduled traffic</i>
Trafic hors des lignes (charter)	5.8	578'184	628'905	-8.1	<i>Non scheduled traffic</i>
Total trafic de ligne et charter	98.9	9'856'546	9'320'223	5.8	Total local traffic
Vols taxi, vols de plaisance et autres	0.7	66'365	54'041	22.8	<i>Taxi flights, leisure flights and other flights</i>
Total trafic commercial	99.6	9'922'911	9'374'264	5.9	Total commercial traffic
Trafic non commercial	0.4	40'076	36'669	9.3	<i>Non commercial traffic</i>
Total trafic général	100.0	9'962'987	9'410'933	5.9	Total general traffic
Mouvements					Movements
Trafic de ligne	62.9	111'218	109'955	1.1	<i>Scheduled traffic</i>
Trafic hors des lignes (charter)	3.4	6'016	6'328	-4.9	<i>Non scheduled traffic</i>
Total trafic de ligne et charter	66.3	117'234	116'283	0.8	Total scheduled and charter traffic
Vols taxi, vols de plaisance et autres	15.4	27'125	23'400	15.9	<i>Taxi flights, leisure flights and other flights</i>
Total trafic commercial	81.7	144'359	139'683	3.3	Total commercial traffic
Trafic non commercial	18.3	32'350	31'253	3.5	<i>Non commercial traffic</i>
Total trafic général	100.0	176'709	170'936	3.4	Total general traffic
Marchandises (tonnes)					Goods (tons)
Trafic de ligne	44.4	25'136	26'509	-5.2	<i>Scheduled traffic</i>
Trafic hors des lignes (charter)	11.9	6'722	6'927	-3.0	<i>Non scheduled traffic</i>
Fret aérien avionné	56.2	31'858	33'436	-4.7	Crafted air freight
Fret aérien camionné	30.7	17'376	18'107	-4.0	<i>Trucked air freight</i>
Total fret aérien	86.9	49'234	51'543	-4.5	Total air freight
Poste locale	13.1	7'410	7'771	-4.6	<i>Local mail</i>
Total fret aérien et poste	100.0	56'644	59'314	-4.5	Total air freight and mail

Statistiques du trafic

Trafic de nuit 2006 / Night traffic 2006

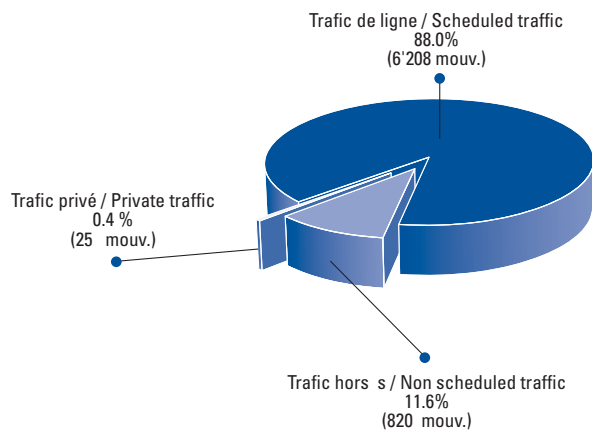
22h00-6h00



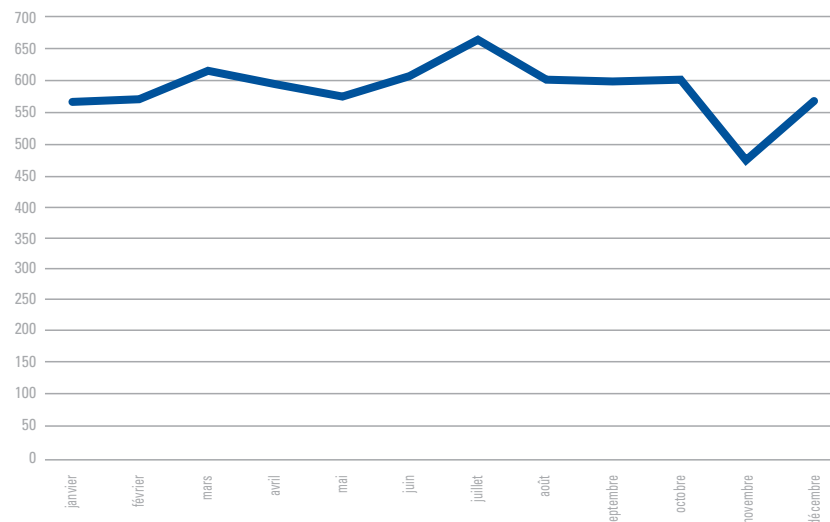
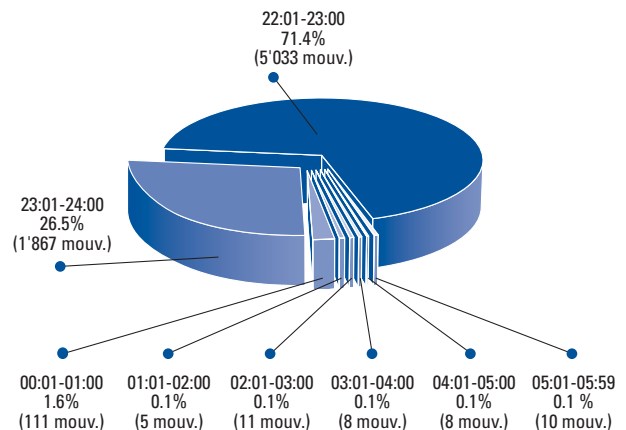
Evolution des mouvements nocturnes Evolution of night movements

mouvements nocturnes en % du total
night movements in % of the total

Mouvements de nuit selon le type de trafic Night movements split by traffic type



Distribution horaire des mouvements nocturnes Distribution of night movements split by hour



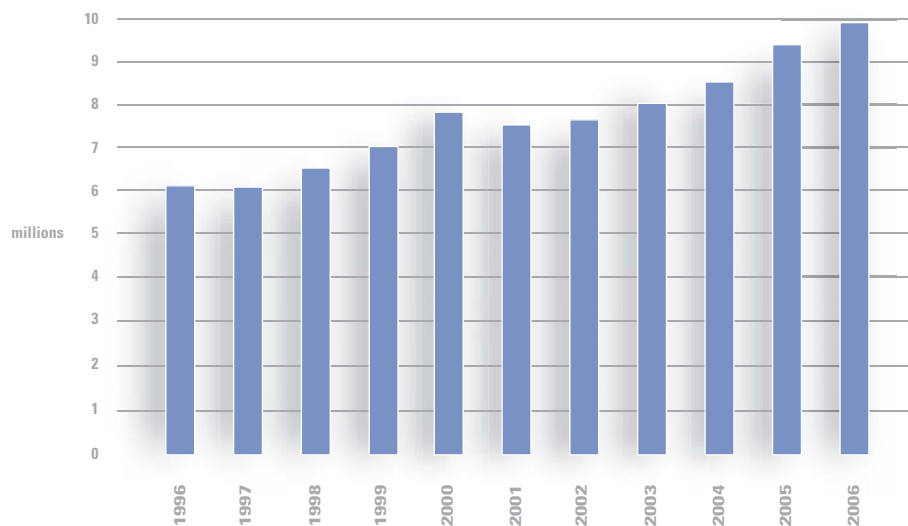
2006 Variation saisonnière des mouvements nocturnes Seasonal variation of night movements

Statistiques du trafic

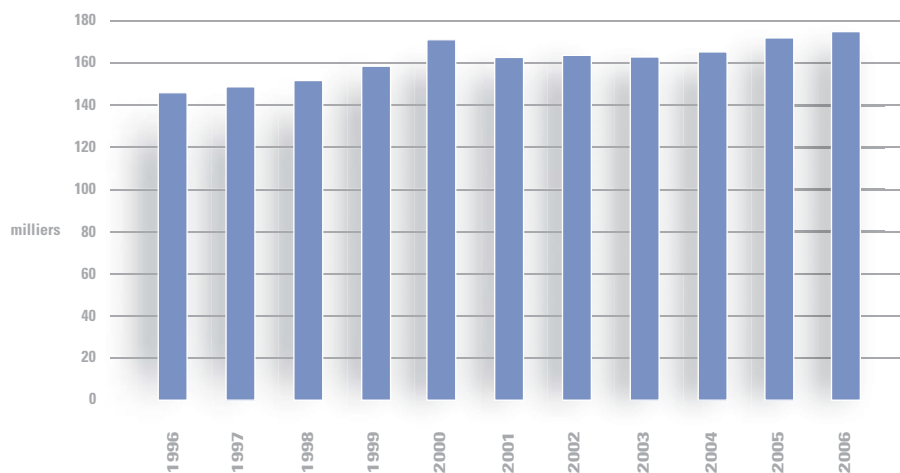
30

Evolution du trafic (1996-2006) / Traffic evolution (1996-2006)

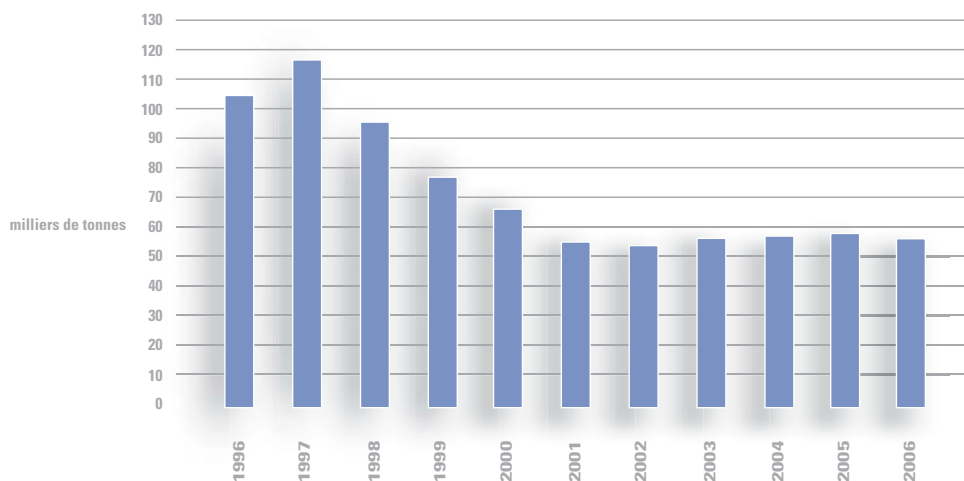
Passagers / Passengers



Mouvements / Movements



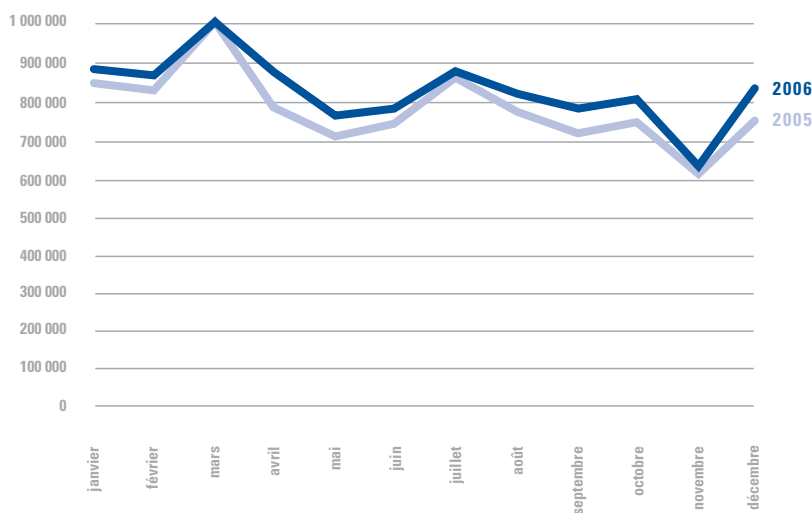
Fret (poste incluse) / Freight (mail included)



Statistiques du trafic

Variation saisonnière du trafic / Seasonal traffic variation

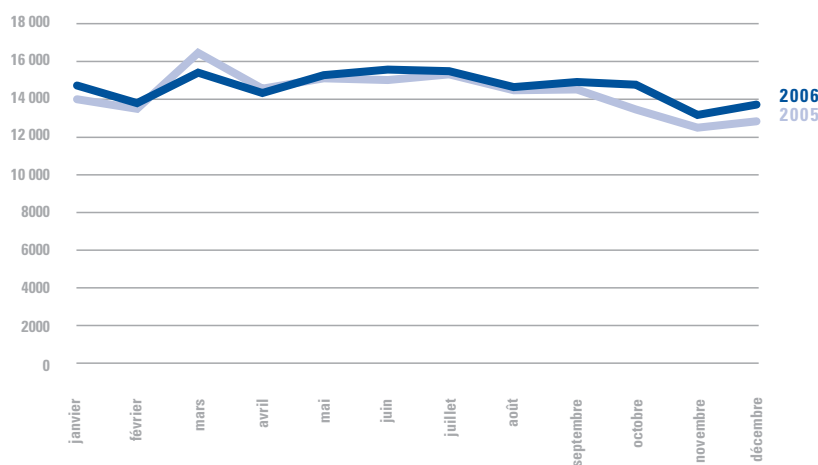
Passagers / Passengers



Pointes de trafic passagers
Passengers traffic peaks

Pointe mensuelle:
Mars / March: 1 000 474

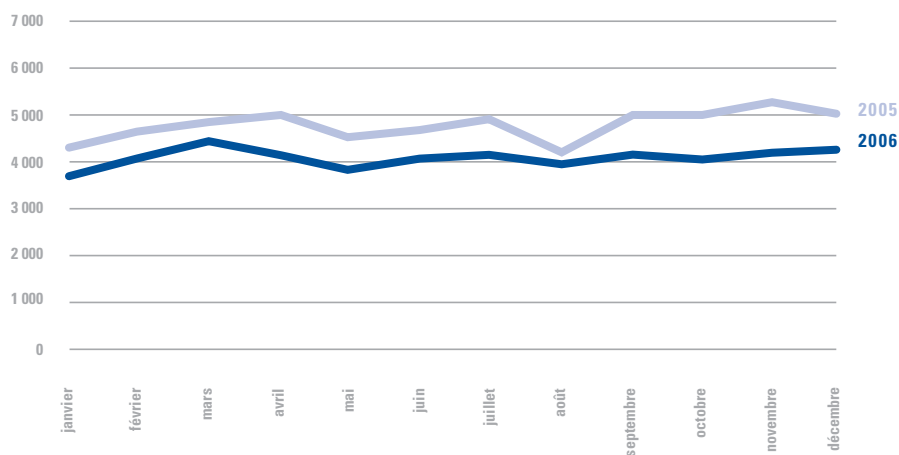
Mouvements / Movements



Pointes de trafic des mouvements
Movements traffic peaks

Pointe mensuelle:
Juin / June : 15 782

Fret (poste incluse) / Freight (mail included)



Statistiques du trafic

32

2006: passagers de lignes (transit exclus)

Pays	Villes	PASSAGERS	%/TOTAL	var 06/05
Algérie		25'755	0.3%	1.0%
	Alger	23'019		-0.9%
	Constantine	1'333		2.5%
	Oran	1'403		-5.1%
Egypte		38'762	0.4%	18.0%
	Cairo	26'930		24.8%
	Hourgada	350		
	Sharm El Sheikh	11'482		2.0%
Libye	Tripoli	15'107	0.2%	37.7%
Maroc		102'401	1.1%	12.5%
	Casablanca	79'140		11.9%
	Marrakech	23'261		55.6%
Maurice	Maurice	15'037	0.2%	2.8%
Tunisie		68'628	0.7%	12.5%
	Djerba	14'587		10.1%
	Monastir	6'874		15.9%
	Tunis	47'167		14.8%
AFRIQUE		265'690	2.9%	12.3%
Etats-Unis		204'781	2.2%	-1.7%
	New York	106'830		-3.0%
	Newark	97'951		2.1%
AMERIQUE NORD		204'781	2.2%	-1.7%
Arabie-Saoudite		14'917	0.2%	27.4%
	Djeddah	5'512		
	Riyadh	9'405		-19.7%
Emirats Arabes Unis	Abu Dhabi	35'952	0.4%	31.0%
Iran	Téhéran	11'031	0.1%	-6.5%
Israël	Tel-Aviv	41'974	0.5%	3.7%
Jordanie	Amman	13'249	0.1%	16.3%
Koweït	Koweït City	10'373	0.1%	-0.8%
Liban	Beyrouth	23'916	0.3%	-19.7%
MOYEN-ORIENT		151'412	1.6%	5.8%
Allemagne		747'318	8.1%	10.9%
	Berlin	99'605		8.0%
	Cologne	10'472		5.7%
	Dortmund	6'735		302.8%
	Dusseldorf	36'539		19.0%
	Francfort	376'534		-0.8%
	Hambourg	8'480		
	Munich	206'871		29.9%
	Stuttgart	2'082		320.6%
Autriche	Vienne	126'807	1.4%	10.0%
Belgique	Bruxelles	309'954	3.4%	2.1%
Danemark	Copenhague	149'444	1.6%	-16.8%
Espagnes & Canaries		956'940	10.4%	12.1%
	Alicante	90'690		0.2%
	Barcelone	387'531		-2.8%
	Ibiza	9'865		261.9%
	Madrid	349'658		6.8%
	Malaga	83'300		307.1%
	Palma de Majorque	26'421		
	Santiago de Compostèle	6'188		-35.7%
	Valence	3'287		-9.5%
Fédération de Russie		133'584	1.4%	-3.7%
	Moscou Domodedovo	60'061		-10.3%
	Moscou Sheremetyevo	72'846		5.0%
	Saint-Peterbourg	677		-70.4%
Finlande	Helsinki	28'893	0.3%	
France		1'290'402	14.0%	0.0%
	Ajaccio	3'420		
	Biarritz	6'849		21.5%
	Bordeaux	31'485		23.7%
	Calvi	1'508		

Top 10 des destinations Destination top 10

Destination	Passagers
Londres	1'173'735
Paris	932'732
Zurich	537'307
Amsterdam	524'530
Barcelone	387'531
Francfort	376'534
Madrid	349'658
Bruxelles	309'954
Rome	306'234
Nice	270'141

Statistiques du trafic

Direct (without stop) scheduled traffic split by country and destination 2005

	Clermont Ferrand	1'164		-82.3%
	Figari	1'861		
	Marseille	1'226		-69.7%
	Nantes	19'328		10.8%
	Nice	270'141		4.9%
	Paris CDG	692'434		-0.2%
	Paris Orly	240'298		-8.1%
	Saint Tropez	3'423		29.9%
	Toulouse	17'265		8.3%
Grèce	Athènes	111'852	1.2%	1.6%
Hongrie	Budapest	103'479	1.1%	-19.1%
Irlande		63'382	0.7%	8.5%
	Dublin	63'382		11.3%
Italie		421'906	4.6%	0.8%
	Cagliari	210		
	Florence	8'049		-13.3%
	Milan	79'076		35.3%
	Olbia	12'185		1'036.7%
	Rome Ciampino	163'318		-0.6%
	Rome Fiumicino	142'916		-16.2%
	Venise	16'152		11.8%
Luxembourg	Luxembourg	29'010	0.3%	2.1%
Malte	Malte	6'101	0.1%	-5.4%
Norvège	Oslo	7'167	0.1%	
Pays-Bas		525'712	5.7%	4.0%
	Amsterdam	524'530		3.7%
	Rotterdam	1'182		
Pologne	Varsovie	23'347	0.3%	4.9%
Portugal		334'381	3.6%	30.9%
	Lisbonne	257'316		39.4%
	Porto	77'065		8.7%
République Tchèque	Prague	38'384	0.4%	137.0%
Royaume-Uni		2'494'474	27.0%	13.8%
	Belfast	39'542		85.2%
	Birmingham	33'962		320.2%
	Bournemouth	28'954		727.7%
	Bristol	123'063		28.7%
	Cardiff	6'412		72.1%
	Doncaster	23'037		778.3%
	Edimbourg	88'660		543.1%
	Exeter	1'845		
	Glasgow	6'957		-43.1%
	Leeds	26'308		-0.4%
	Liverpool	127'911		-1.0%
	Londres City	176'028		-12.5%
	Londres Gatwick	576'882		15.0%
	Londres Heathrow	570'063		2.2%
	Londres Luton	304'208		-12.8%
	Londres Stansted	116'617		1'327.2%
	Manchester	64'657		3.9%
	Newcastle	70'371		-10.1%
	Norwich	1'784		
	Nottingham	101'786		0.2%
	Southampton	5'427		8.0%
Suède	Stockholm	51'460	0.6%	-3.9%
Suisse		584'334	6.3%	-4.8%
	Bâle	96		-12.7%
	Lugano	46'931		-14.2%
	Zurich	537'307		-3.8%
Turquie	Istanbul	82'250	0.9%	-1.2%
EUROPE		8'620'581	93.3%	7.1%
MONDE		9'242'464	100.0%	7.0%

Top 10 pays Country top 10

Destination	Passagers
Royaume-Uni	2'494'474
France	1'290'402
Espagne	956'940
Allemagne	747'318
Suisse	584'334
Pays-Bas	525'712
Italie	421'906
Portugal	334'381
Belgique	309'954
Etats-Unis	204'781