

Statistiques du trafic

28

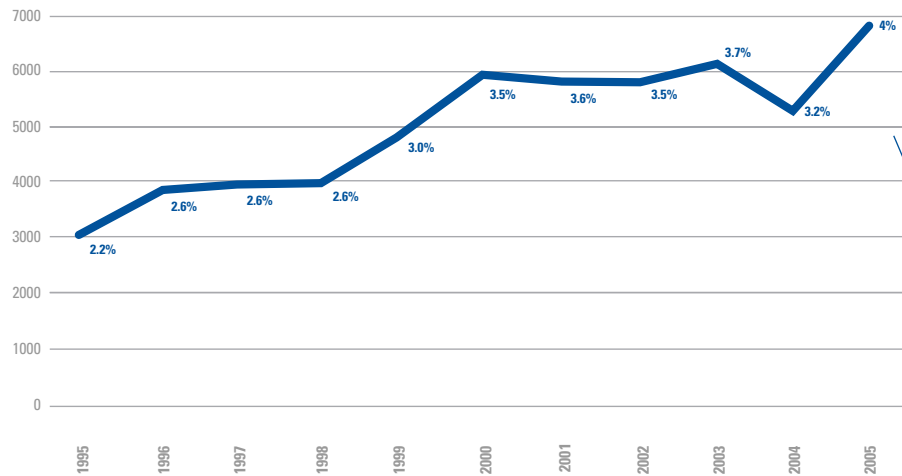
Résultats du trafic global / Global traffic

	2005 %/total	2005	2004	variation %	
Passagers					Passengers
Trafic local:					<i>Local traffic:</i>
Trafic de ligne	91.8	8'636'148	7'812'461	10.5	<i>Scheduled traffic</i>
Trafic hors des lignes (charter)	6.5	614'822	646'226	-4.9	<i>Non scheduled traffic</i>
Total trafic local	98.3	9'250'970	8'458'687	9.4	Total local traffic
Trafic en transit direct	0.7	69'253	58'237	18.9	<i>Direct transfer traffic</i>
Total trafic de ligne et charter	99.0	9'320'223	8'516'924	9.4	Total scheduled and charter traffic
Vols taxi, vols de plaisance et autres	0.6	54'041	40'854	32.3	<i>Taxi flights, leisure flights and other flights</i>
Total trafic commercial	99.6	9'374'264	8'557'778	9.5	Total commercial traffic
Trafic non commercial	0.4	36'653	35'652	2.8	<i>Non commercial traffic</i>
Total trafic général	100.0	9'410'917	8'593'430	9.5	Total general traffic
Mouvements					Movements
Trafic de ligne	64.3	109'955	105'940	3.8	<i>Scheduled traffic</i>
Trafic hors des lignes (charter)	3.7	6'328	6'848	-7.6	<i>Non scheduled traffic</i>
Total trafic de ligne et charter	68.0	116'283	112'788	3.1	Total scheduled and charter traffic
Vols taxi, vols de plaisance et autres	13.7	23'399	21'983	6.4	<i>Taxi flights, leisure flights and other flights</i>
Total trafic commercial	81.7	139'682	134'771	3.6	Total commercial traffic
Trafic non commercial	18.3	31'254	31'860	-1.9	<i>Non commercial traffic</i>
Total trafic général	100.0	170'936	166'631	2.6	Total general traffic
Marchandises (tonnes)					Goods (tons)
Trafic de ligne	44.7	26'509	25'659	3.3	<i>Scheduled traffic</i>
Trafic hors des lignes (charter)	11.6	6'927	7'063	-1.9	<i>Non scheduled traffic</i>
Fret aérien avionné	56.4	33'436	32'742	2.1	Crafted air freight
Fret aérien camionné	30.5	18'107	17'348	4.4	<i>Trucked air freight</i>
Total fret aérien	86.9	51'543	50'090	2.9	Total air freight
Poste locale	13.1	7'771	9'796	-20.7	<i>Local mail</i>
Total fret aérien et poste	100.0	59'314	59'886	-0.1	Total air freight and mail

Statistiques du trafic

Trafic de nuit 2005 / Night traffic 2005

22h00-6h00

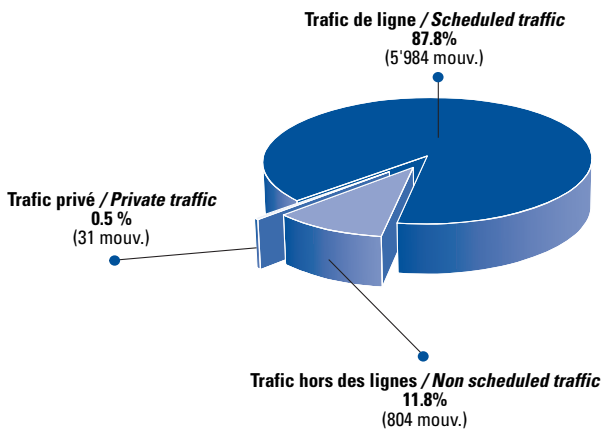


Evolution des mouvements nocturnes
Evolution of night movements

mouvements nocturnes en % du total
night movements in % of the total

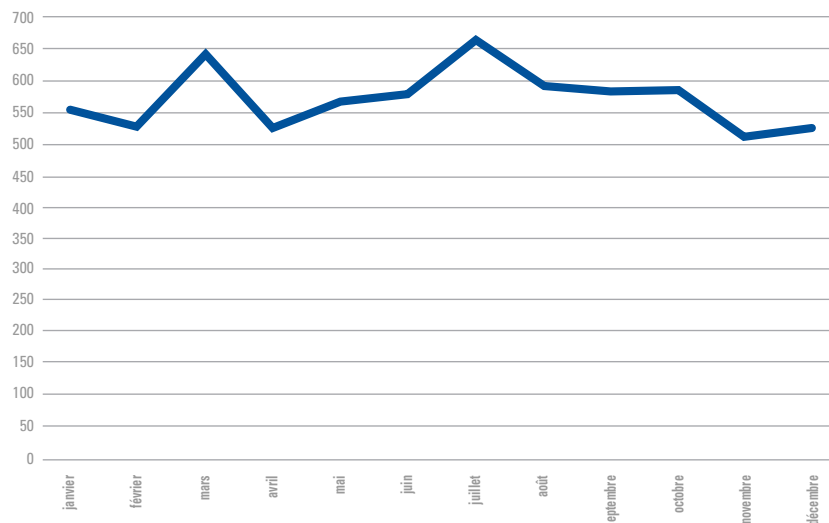
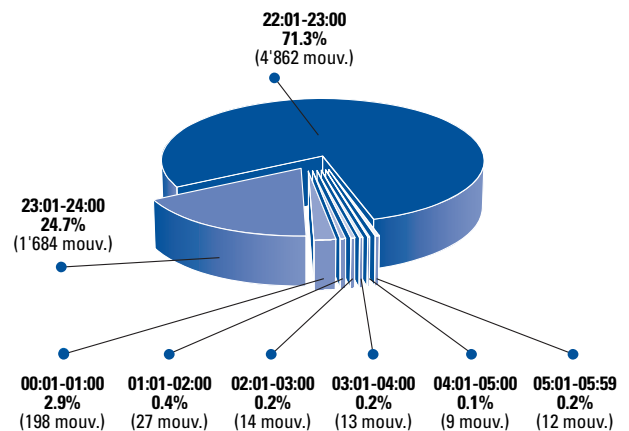
Mouvements de nuit selon le type de trafic

Night movements split by traffic type



Distribution horaire des mouvements nocturnes

Distribution of night movements split by hour



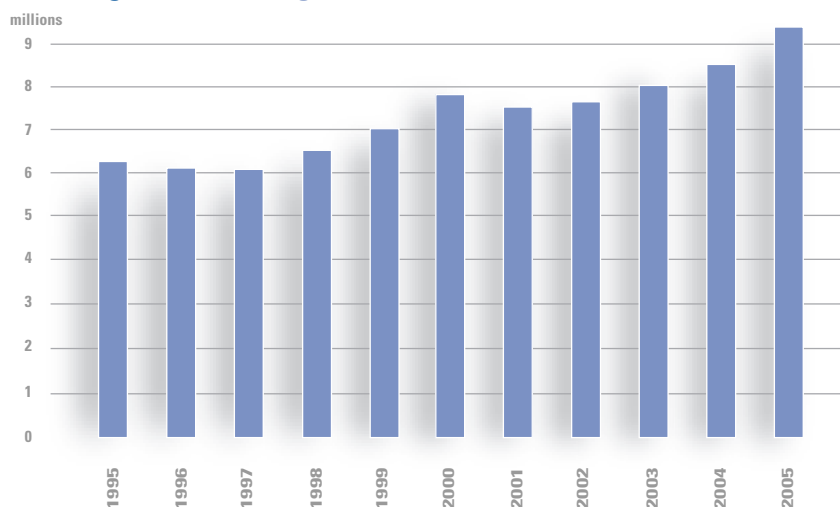
2005
Variation saisonnière des mouvements nocturnes
Seasonal variation of night movements

Statistiques du trafic

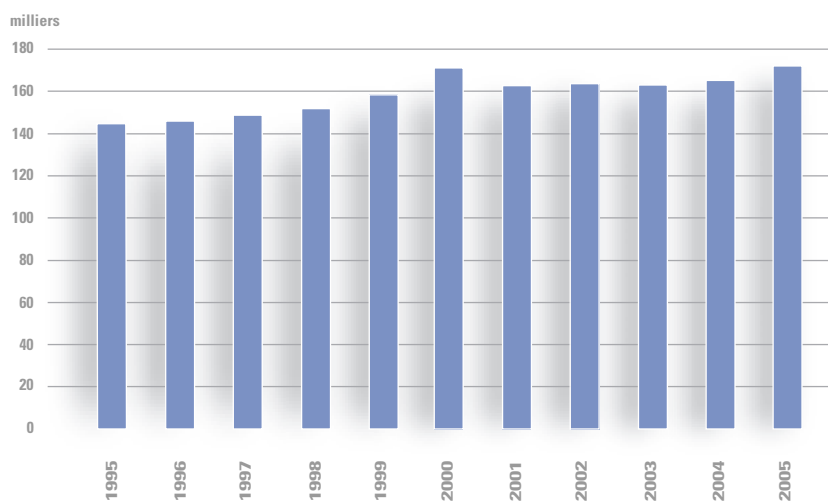
Evolution du trafic (1995-2005) / Traffic evolution (1995-2005)

30

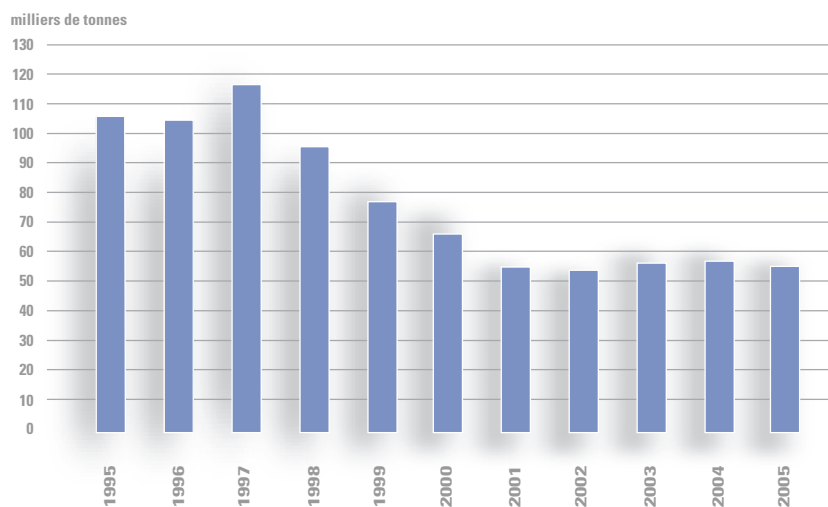
Passagers / Passengers



Mouvements / Movements



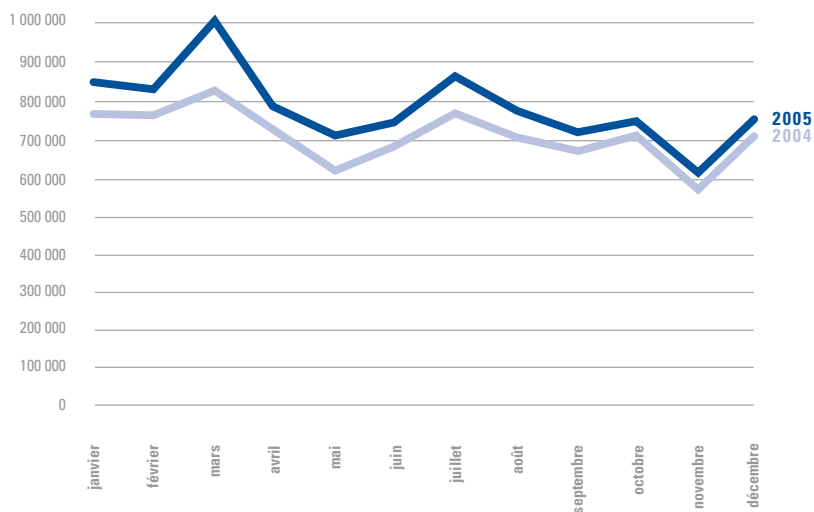
Fret (poste incluse) / Freight (mail included)



Statistiques du trafic

Variation saisonnière du trafic / Seasonal traffic variation

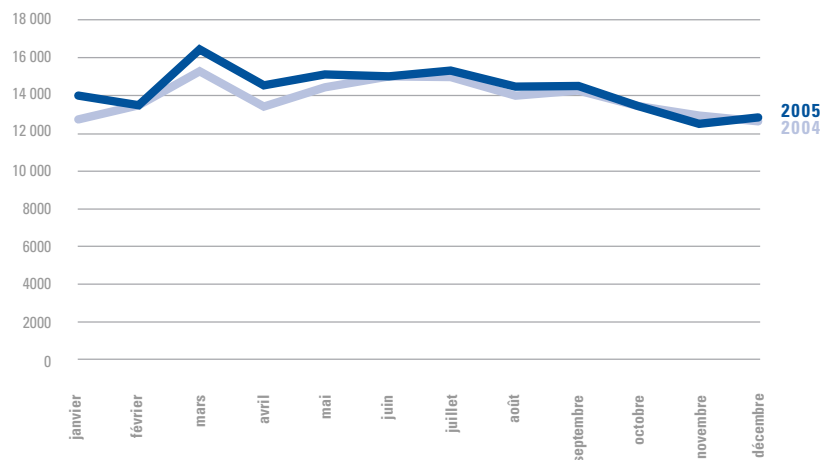
Passagers / Passengers



Pointes de trafic passagers
Passengers traffic peaks

Pointe mensuelle:
Mars / March : 1 003 960

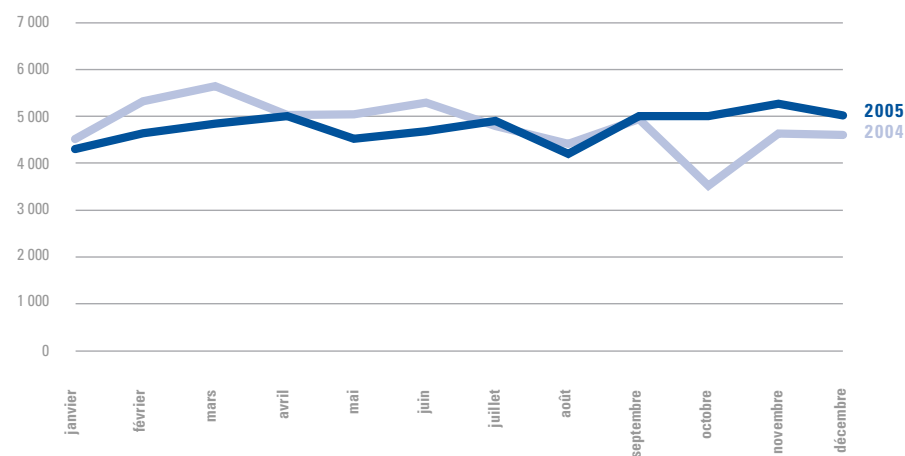
Mouvements / Movements



Pointes de trafic des mouvements
Movements traffic peaks

Pointe mensuelle:
Mars / March : 16 187

Fret (poste incluse) / Freight (mail included)



Statistiques du trafic

32

Trafic de ligne direct (sans escale) par pays et destination 2005

Pays	Villes	PASSAGERS	%/TOTAL	var 05/04
Algérie		26'013	0.3%	1.1%
	Alger	23'234		0.6%
	Constantine	1'301		11.9%
	Oran	1'478		0.3%
Egypte		32'840	0.4%	8.4%
	Cairo	21'584		13.9%
	Sharm El Sheikh	11'256		3440.0%
Libye	Tripoli	10'972	0.1%	33.5%
Maroc		91'056	1.1%	10.6%
	Agadir	5'362		7.0%
	Casablanca	70'748		16.0%
	Marrakech	14'946		2.6%
Maurice	Maurice	14'626	0.2%	2.2%
Tunisie		61'007	0.7%	-1.4%
	Djerba	13'245		2.3%
	Monastir	5'931		3.3%
	Tabarka	745		-64.4%
	Tunis	41'086		0.0%
AFRIQUE		236'514	2.8%	6.2%
Etats-Unis		208'407	2.4%	4.0%
	Chicago	2'286		2440.0%
	New York	110'164		1.2%
	Newark	95'957		5.0%
AMERIQUE NORD		208'407	2.4%	4.0%
Arabie-Saoudite	Riyadh	11'708	0.1%	2.2%
Emirats Arabes Unis	Abu Dhabi	27'449	0.3%	150.3%
Iran	Téhéran	11'804	0.1%	4.5%
Israël	Tel-Aviv	40'477	0.5%	-0.8%
Jordanie	Amman	11'396	0.1%	4.3%
Koweït	Koweït City	10'455	0.1%	-32.5%
Liban	Beirut	29'796	0.3%	-7.3%
MOYEN-ORIENT		143'085	1.5%	5.7%
Allemagne		673'949	7.8%	15.7%
	Berlin	92'262		982.6%
	Cologne	9'909		-65.1%
	Dortmund	1'672		
	Dusseldorf	30'694		-8.9%
	Francfort	379'665		2.9%
	Munich	159'252		12.5%
	Stuttgart	495		21.6%
Autriche	Vienne	115'297	1.3%	5.5%
Belgique	Bruxelles	303'716	3.5%	1.7%
Danemark	Copenhague	179'529	2.1%	17.1%
Espagnes & Canaries		853'323	9.9%	32.9%
	Alicante	90'545		576.1%
	Barcelone	398'800		9.8%
	Ibiza	2'726		151.7%
	Madrid	327'527		36.9%
	Malaga	20'463		66.4%
	Santiago De Compostèle	9'631		-9.7%
	Valence	3'631		61.5%
Fédération de Russie		138'677	1.6%	8.7%
	Moscou Domodedovo	66'984		14.0%
	Moscou Sheremetyevo	69'404		4.3%
	Saint-Peterbourg	2'289		-0.9%
Finlande	Helsinki	97	0.0%	-99.1%
France		1'290'970	14.9%	-2.0%
	Biarritz	5'635		26.5%
	Bordeaux	25'457		74.4%
	Clermont Ferrand	6'561		-64.6%
	Lyon	133		
	Marseille	4'052		-6.0%
	Nantes	17'450		207.8%

Top 10 des destinations Destination top 10

Destination	Passagers
Londres	1'617'585
Paris	955'638
Zurich	558'448
Amsterdam	505'647
Barcelone	398'800
Francfort	379'665
Rome	334'881
Madrid	327'527
Bruxelles	303'716
Nice	257'460

Statistiques du trafic

Direct (without stop) scheduled traffic split by country and destination 2005

	Nice	257'460		2.2%
	Paris CDG	694'089		2.1%
	Paris Orly	261'549		-19.7%
	Saint-Tropez	2'635		147.7%
	Toulouse	15'949		34.7%
Grèce	Athènes	110'109	1.3%	22.6%
Hongrie	Budapest	127'855	1.5%	115.1%
Irlande		58'397	0.7%	24.3%
	Dublin	56'941		21.8%
	Shannon	1'456		524.9%
Italie		418'471	4.8%	44.7%
	Bologne	108		
	Florence	9'282		157.3%
	Milan	58'425		-13.1%
	Naples	131		
	Olbia	1'072		3.7%
	Rome Ciampino	164'385		566.0%
	Rome Fiumicino	170'496		-6.3%
	Turin	122		
	Venise	14'450		51.9%
Lettonie	Riga	1'689	0.0%	748.7%
Luxembourg	Luxembourg	28'420	0.3%	1.0%
Malte	Malte	6'447	0.1%	-22.6%
Norvège	Oslo Gardermoen	155	0.0%	-97.7%
Pays-Bas	Amsterdam	505'647	5.9%	3.9%
Pologne	Varsovie	22'266	0.3%	15.5%
Portugal		255'447	3.0%	4.7%
	Lisbonne	184'561		6.5%
	Porto	70'886		0.2%
République Tchèque	Prague	16'198	0.2%	607.0%
Royaume-Uni		2'191'039	25.4%	10.6%
	Belfast	21'350		
	Birmingham	8'082		-36.4%
	Bournemouth	3'498		
	Bristol	95'583		2331.0%
	Cardiff	3'725		2953.0%
	Doncaster Sheffield	2'623		
	Edimbourg	13'787		49.1%
	Exeter	281		
	Glasgow	12'231		1587.0%
	Leeds	26'418		99.9%
	Liverpool	129'201		-3.0%
	Londres City	201'124		145.3%
	Londres Gatwick	501'498		2.3%
	Londres Heathrow	557'747		-16.5%
	Londres Luton	349'045		-10.2%
	Londres Stansted	8'171		7005.0%
	Manchester	62'207		-0.6%
	Manston	6'803		345.2%
	Newcastle	78'308		2276.0%
	Norwich	268		
	Nottingham	101'631		7.0%
	Southampton	5'024		-69.2%
	Teesside	2'434		5837.0%
Suède	Stockholm	53'544	0.6%	0.1%
Suisse		613'655	7.1%	-1.5%
	Basel	110		
	Geneve	380		
	Lugano	54'717		32.2%
	Zurich	558'448		-4.0%
Turquie	Istanbul	83'251	1.0%	14.6%
EUROPE		8'048'148	93.2%	11.0%
MONDE		8'636'154	100.0%	10.5%

Top 10 pays Country top 10

Destination	Passagers
Royaume-Uni	2'191'039
France	1'290'970
Espagne	853'323
Allemagne	673'949
Suisse	613'655
Pays-Bas	505'647
Italie	418'471
Belgique	303'716
Portugal	255'447
Etats-Unis	208'407