

Statistiques du trafic

28

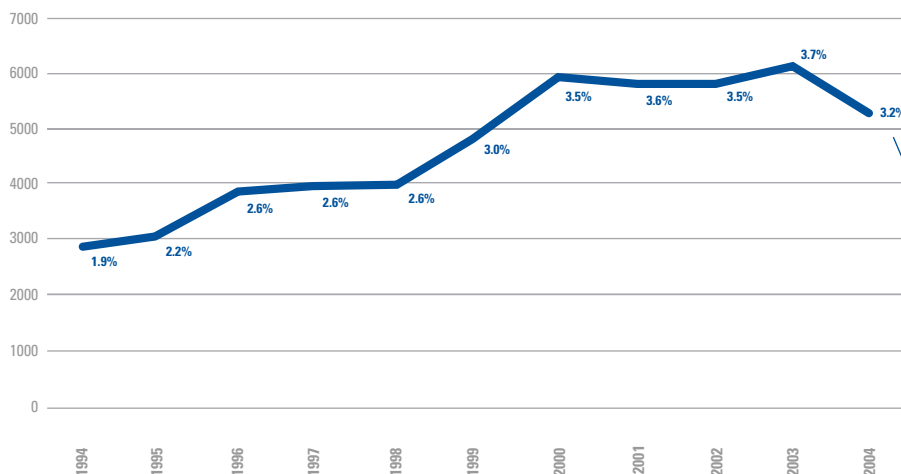
Résultats du trafic global / Global traffic

	2004 %/total	2004	2003	variation %	
Passagers					Passengers
Trafic local:					<i>Local traffic:</i>
Trafic de ligne	90.9	7'812'461	7'340'156	6.4	<i>Scheduled traffic</i>
Trafic hors des lignes (charter)	7.5	646'226	625'802	3.3	<i>Non scheduled traffic</i>
Total trafic local	98.4	8'458'687	7'965'958	6.2	Total local traffic
Trafic en transit direct	0.7	58'237	38'240	52.3	<i>Direct transfer traffic</i>
Total trafic de ligne et charter	99.1	8'516'924	8'004'198	6.4	Total scheduled and charter traffic
Vols taxi, vols de plaisance et autres	0.5	40'854	44'500	-8.2	<i>Taxi flights, leisure flights and other flights</i>
Total trafic commercial	99.6	8'557'778	8'048'698	6.3	Total commercial traffic
Trafic non commercial	0.4	35'652	39'792	-10.4	<i>Non commercial traffic</i>
Total trafic général	100.0	8'593'430	8'088'490	6.2	Total general traffic
Mouvements					Movements
Trafic de ligne	63.6	105'940	108'394	-2.3	<i>Scheduled traffic</i>
Trafic hors des lignes (charter)	4.1	6'848	6'890	-0.6	<i>Non scheduled traffic</i>
Total trafic de ligne et charter	67.7	112'788	115'284	-2.2	Total scheduled and charter traffic
Vols taxi, vols de plaisance et autres	13.2	21'983	18'028	21.9	<i>Taxi flights, leisure flights and other flights</i>
Total trafic commercial	80.9	134'771	133'312	1.1	Total commercial traffic
Trafic non commercial	19.1	31'860	30'448	4.6	<i>Non commercial traffic</i>
Total trafic général	100.0	166'631	163'760	1.8	Total general traffic
Marchandises (tonnes)					Goods (tons)
Trafic de ligne	42.8	25'659	26'144	-1.9	<i>Scheduled traffic</i>
Trafic hors des lignes (charter)	11.8	7'063	6'190	14.1	<i>Non scheduled traffic</i>
Fret aérien avionné	54.6	32'722	32'334	1.2	Crafted air freight
Fret aérien camionné	29	17'368	16'868	3.0	<i>Trucked air freight</i>
Total fret aérien	83.6	50'090	49'202	1.8	Total air freight
Poste locale	16.4	9'796	9'275	5.6	<i>Local mail</i>
Total fret aérien et poste	100.0	59'886	58'477	2.4	Total air freight and mail

Statistiques du trafic

Trafic de nuit 2004 / Night traffic 2004

22h00-6h00

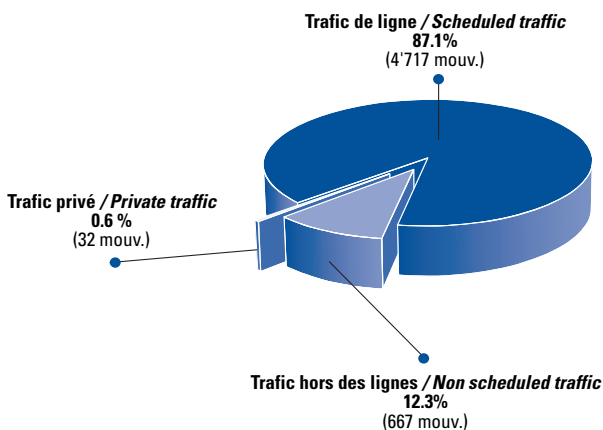


Evolution des mouvements nocturnes
Evolution of night movements

mouvements nocturnes en % du total
night movements in % of the total

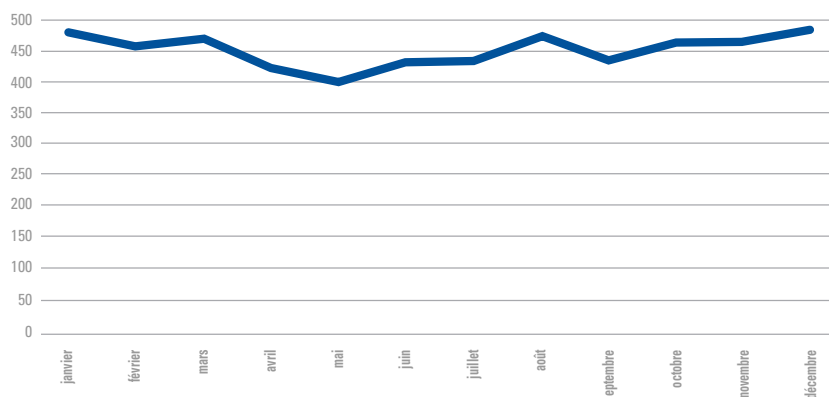
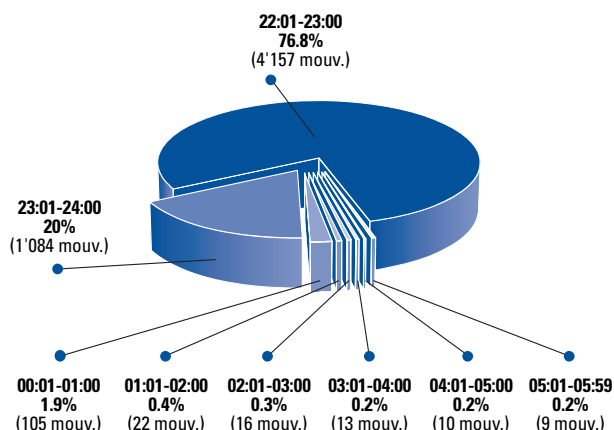
Mouvements de nuit selon le type de trafic

Night movements split by traffic type



Distribution horaire des mouvements nocturnes

Distribution of night movements split by hour



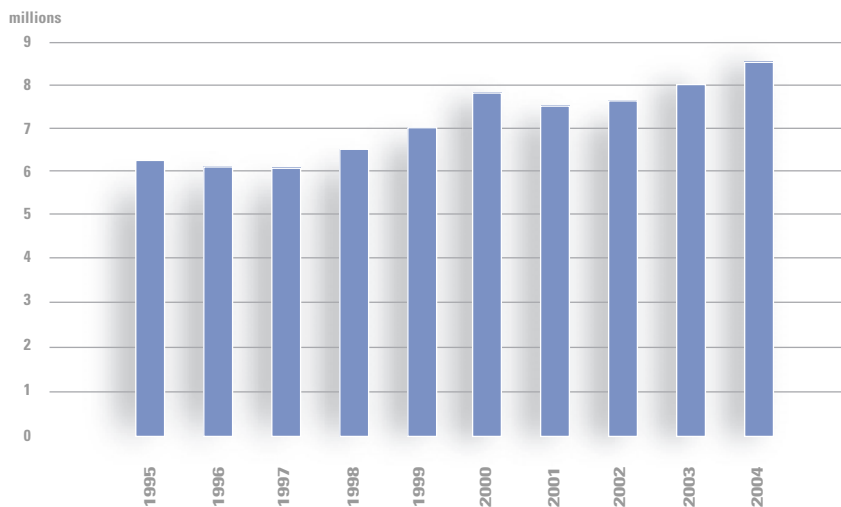
2004
Variation saisonnière des mouvements nocturnes
Seasonal variation of night movements

Statistiques du trafic

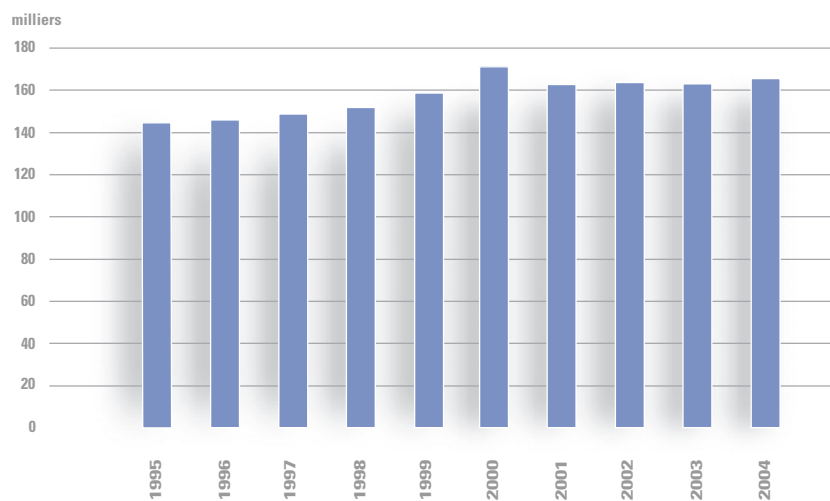
Evolution du trafic (1995-2004) / Traffic evolution (1995-2004)

30

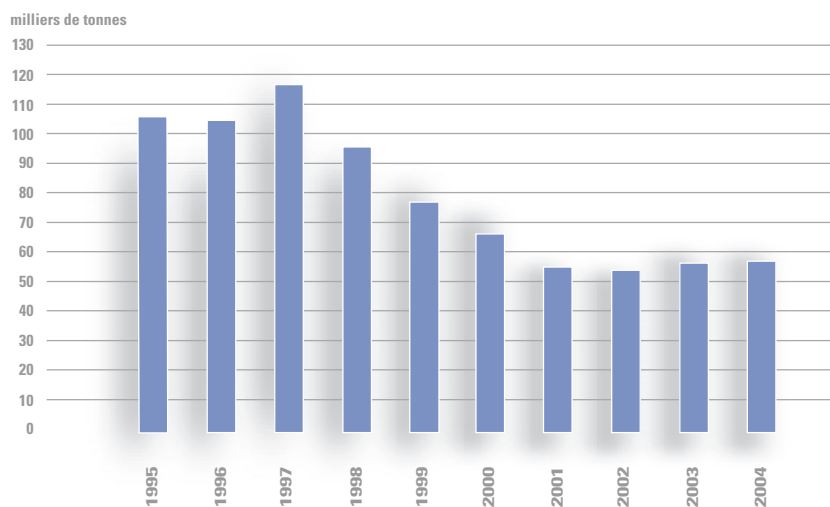
Passagers / Passengers



Mouvements / Movements



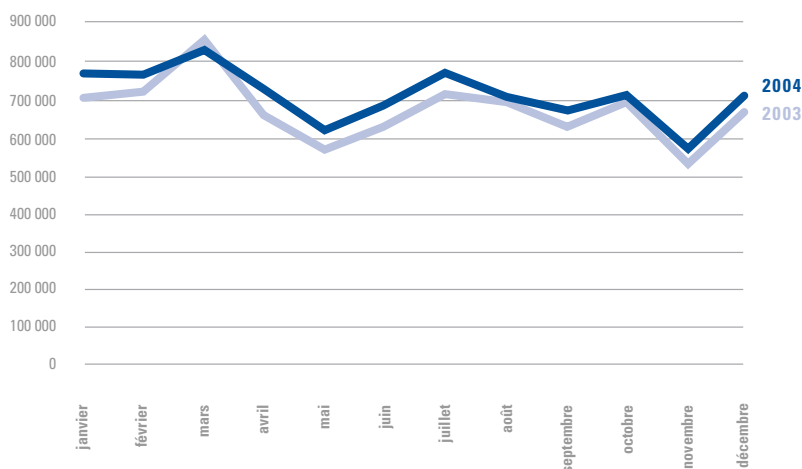
Fret (poste incluse) / Freight (mail included)



Statistiques du trafic

Variation saisonnière du trafic / Seasonal traffic variation

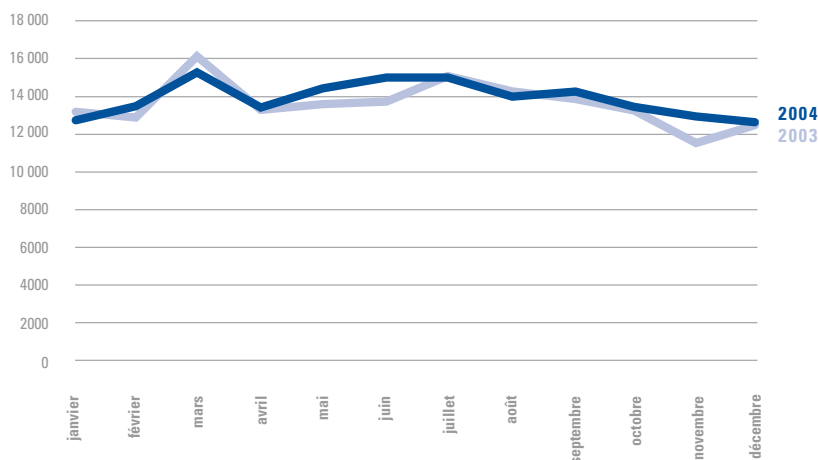
Passagers / Passengers



Pointes de trafic passagers
Passengers traffic peaks

Pointe mensuelle:
Mars / March: 844 862

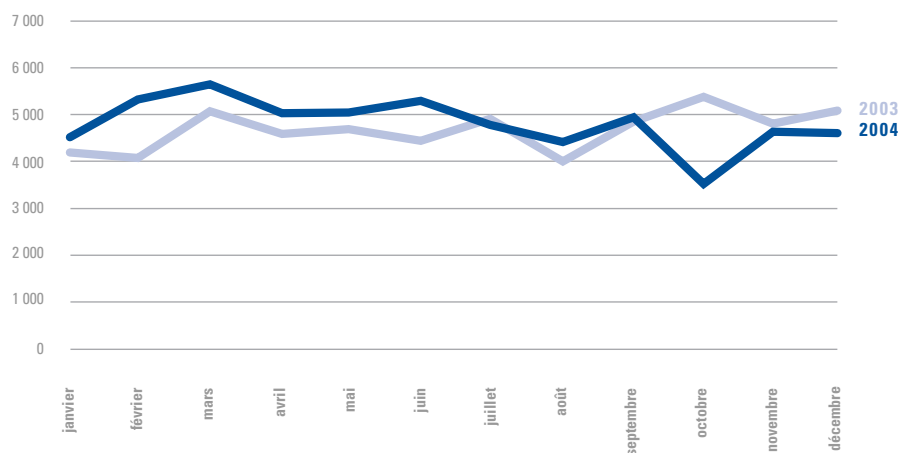
Mouvements / Movements



Pointes de trafic des mouvements
Movements traffic peaks

Pointe mensuelle:
Mars / March : 15 331

Fret (poste incluse) / Freight (mail included)



Statistiques du trafic

32

Trafic de ligne direct (sans escale) par pays et destination 2004

Pays	Villes	PASSAGERS	%/TOTAL	var 04/03
Suisse		623'004	8.0%	-1.1%
	Lugano	41'379		-8.5%
	Zurich	581'625		-0.5%
Reste de l'Europe		6'630'638	84.9%	7.2%
Allemagne		582'339	7.5%	10.0%
	Berlin	8'522		
	Dusseldorf	33'676		34.4%
	Francfort	369'064		5.6%
	Hambourg	723		-94.0%
	Cologne	28'371		42.8%
	Munich	141'576		20.2%
	Stuttgart	407		0.7%
Autriche	Vienne	109'310	1.4%	9.9%
Belgique	Bruxelles	298'603	3.8%	5.0%
Danemark	Copenhague	153'340	2.0%	7.1%
Espagne		642'224	8.2%	11.2%
	Alicante	13'393		202.6%
	Barcelone	363'333		11.7%
	Ibiza	1'083		
	Madrid	239'212		15.4%
	Malaga	12'295		-50.8%
	Santiago De Compostèle	10'660		-12.5%
	Valence	2'248		
Finlande	Helsinki	10'471	0.1%	153.8%
France		1'317'933	16.9%	1.6%
	Biarritz	4'456		218.3%
	Bordeaux	14'597		
	Clermont Ferrand	18'513		-50.6%
	Marseille	4'310		
	Mulhouse	355		
	Nantes	5'670		
	Nice	251'820		-6.7%
	Paris	1'005'308		4.5%
	<i>Roissy CDG</i>	679'672		9.3%
	<i>Orly</i>	325'636		-4.2%
	Saint-Tropez	1'064		
	Toulouse	11'840		
Fédération de Russie		127'587	1.6%	9.4%
	Moscou	125'278		8.0%
	<i>Domodedovo</i>	58'737		17.4%
	<i>Sheremetyevo</i>	66'541		0.9%
	Saint-Peterbourg	2'309		255.8%
Grèce	Athènes	89'808	1.1%	20.3%
Hongrie	Budapest	59'426	0.8%	188.0%
Irlande		46'975	0.6%	21.6%
	Dublin	46'742		21.0%
	Shannon	233		
Italie		289'235	3.7%	21.1%
	Cagliari	1'144		-8.0%
	Florence	3'608		
	Milan	67'259		-9.2%
	Olbia	1'034		-30.7%
	Rome	206'679		27.9%
	<i>Ciampino</i>	24'683		
	<i>Fuimicino</i>	181'996		12.6%
	Venise	9'511		
Lettonie	Riga	199	0.0%	
Luxembourg	Luxembourg	28'135	0.4%	2.9%
Malte	Malte	8'333	0.1%	-2.7%
Norvège	Oslo	6'831	0.1%	
Pays-Bas	Amsterdam	486'818	6.2%	4.1%
Pologne	Varsovie	19'270	0.2%	13.2%

Top 10 des destinations Destination top 10

Destination	Passagers
Londres	1'629'443
Paris	1'005'308
Zurich	581'625
Amsterdam	486'818
Francfort	369'064
Barcelone	363'333
Bruxelles	298'603
Nice	251'820
Madrid	239'212
Rome	206'679

Statistiques du trafic

Direct (without stop) scheduled traffic split by country and destination 2004

Portugal		244'044	3.1%	22.7%
	Lisbonne	173'299		21.7%
	Porto	70'745		25.2%
Royaume-Uni		1'981'337	25.4%	3.1%
	Birmingham	12'716		-77.8%
	Bristol	3'932		
	Cardiff	122		
	East Midlands	94'980		-3.6%
	Edimbourg	9'245		269.5%
	Glasgow	725		
	Leeds	13'217		
	Liverpool	133'218		-7.9%
	Londres	1'629'443		5.6%
	City	82'002		86.8%
	Gatwick	490'209		8.0%
	Heathrow	668'306		-2.4%
	Luton	388'811		8.0%
	Stansted	115		
	Manchester	62'587		64.2%
	Manston	1'528		
	Newcastle	3'296		
	Southampton	16'287		-53.8%
	Teeside	41		
République Tchèque	Prague	2'291	0.0%	
Suède	Stockholm	53'471	0.7%	11.6%
Turquie	Istanbul	72'658	0.9%	8.6%
Reste du monde		558'500	7.1%	6.0%
Algérie		25'722	0.3%	4.3%
	Alger	23'085		4.9%
	Constantine	1'163		-2.0%
	Oran	1'474		1.0%
Egypte		30'308	0.4%	2.0%
	Caire	18'950		20.4%
	Hurghada	10'910		-10.3%
	Luxor	130		-88.0%
	Sharm El Sheikh	318		-56.2%
Libye	Tripoli	8'218	0.1%	
Maroc		82'319	1.1%	-5.8%
	Agadir	5'013		6.1%
	Casablanca	61'004		-15.1%
	Marrakech	14'564		53.1%
	Tanger	1'738		26.7%
Maurice	Maurice	14'310	0.2%	-10.7%
Tunisie		61'851	0.8%	-15.7%
	Djerba	12'946		-6.4%
	Monastir	5'739		-18.9%
	Tabarka	2'091		29.5%
	Tunis	41'075		-19.2%
Etats-Unis		200'345	2.6%	17.7%
	Chicago	90		
	New York	200'255		17.6%
	JFK	108'878		1.9%
	Newark	91'377		44.2%
Arabie Saoudite		11'452	0.1%	17.1%
	Jeddah	8'670		16.6%
	Riyadh	2'782		18.7%
Emirats Arabes Unis	Abu Dhabi	10'966	0.1%	
Iran	Téhéran	11'293	0.1%	56.6%
Israël	Tel-Aviv	40'784	0.5%	2.7%
Jordanie	Amman	10'926	0.1%	42.6%
Koweït	Koweït City	15'490	0.2%	0.7%
Liban	Beyrouth	32'134	0.4%	21.7%
Thaïlande	Bangkok	2'382	0.0%	-90.9%
TOTAL GENERAL		7'812'142	100.0%	6.4%

Passagers charter (transit exclus)

Pays	Volume	%/Total
Royaume-Uni	270'677	42.0%
Tunisie	61'288	9.5%
Espagne (sans Canaries)	48'150	7.5%
Turquie	36'926	5.7%
Canaries	32'071	5.0%
Suède	28'538	4.4%
Egypte	28'162	4.4%
Kosovo	24'015	3.7%
Grèce	21'805	3.4%
Italie	16'431	2.5%
Israël	15'039	2.3%
France	12'352	1.9%
Portugal	11'408	1.8%
Irlande	5'052	0.8%
Danemark	4'714	0.7%
Autres destinations	27'808	4.3%

TOTAL GENERAL 644'436 100.0%

Top 10 pays Country top 10

Destination	Passagers
Royaume-Uni	1'981'337
France	1'317'933
Espagne	642'224
Suisse	623'004
Allemagne	582'339
Italie	289'235
Portugal	244'044
Etats-Unis	200'345
Maroc	127'587
Tunisie	82'319